



SeaComfort Roll 16 G220

Thermal insulation
for decks and bulkheads

The product can be used alone or in addition to ISOVER Ultimate fire insulation. The insulation roll will be installed to the deck or bulkhead with the welding pins. The joints will be sealed with ISOVER G120 Tape.

Material: The product is a soft glass wool mat, faced with a white glass fabric laminate and packed in rolls. Product has very high compressibility and can be compressed to 1/4 of its nominal volume. The product has a width of 1200 mm. Product is treated with water-repulsion substance. Insulating material is non-organic and chemically neutral and does not contain corrosive agents.



THERMAL INSULATION

Avoid heat losses and prevent condensation



LIGHTWEIGHT

Lightweight rolls are easy to work with in all conditions



ANTI-FLAME PACKAGING

Anti-flame classification plastic

Characteristic	Symbol	Unit	Quantities and declared values					Standard
THERMAL CONDUCTIVITY								
	T	[°C]	10	50	100	200	250	
	λ	[W/(m·K)]	0,037	-	-	-	-	
MAXIMUM SERVICE TEMPERATURE								
		[°C]	150°C					
NOMINAL DENSITY								
		[kg/m³]	16 kg/m³					
FIRE REACTION								
			Non-combustible material A1/3.13					
FACING								
			One side faced with a white glass fabric 220 g/m2.					

MARINE CERTIFICATES

10001/GO MED, valid 5.5.2030

U.S Coast Guard 164.109/EC2690, valid 5.5.2030



Dimensions / packaging:

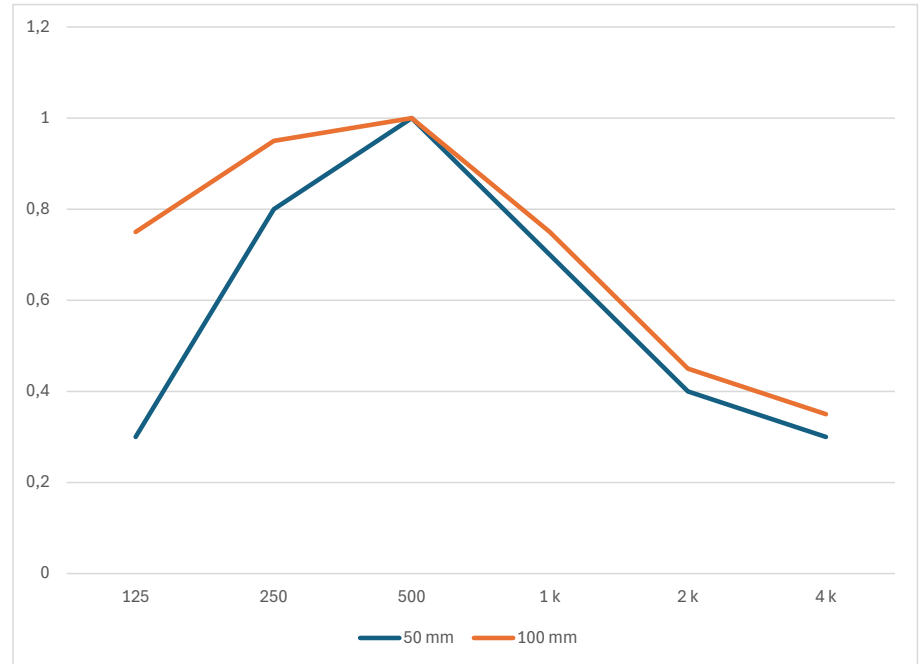
Pressed rolls in plastic bags on pallet. Anti-flame classification plastic.

Thickness (mm)	Width (mm)	Length (mm)	Contents (m ² /pck)	Contents (m ² /pallet)
50	1200	11000	13,20	198,00
80	1200	6500	7,80	117,00
100	1200	5500	6,60	99,00

Stock items 50 and 100 mm.

Sound absorption (Hz)

Hz	50 mm	100 mm
125	0,3	0,75
250	0,8	0,95
500	1	1
1 k	0,7	0,75
2 k	0,4	0,45
4 k	0,3	0,35



tekniset.isover.fi

The technical information corresponds to our present state of knowledge and experience at the date of printing (see imprint). But no legal guarantee can be given, unless it has been explicitly agreed. The state of experience and knowledge is developing continuously. Please see to it that you always use the latest edition of this information. The described product applications do not take special circumstances in consideration. Please verify whether our products are appropriate for the concrete application. For further information please contact our Isover sales offices. We deliver only according to our terms of trade and terms of delivery.