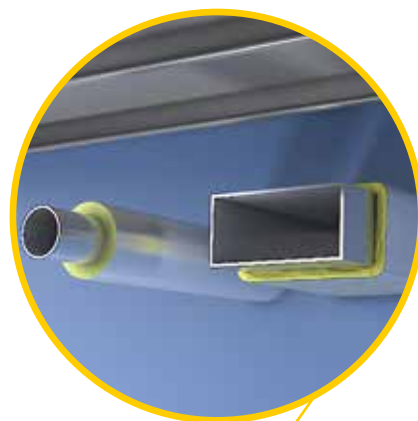




GW SEACOMFORT PROFIX

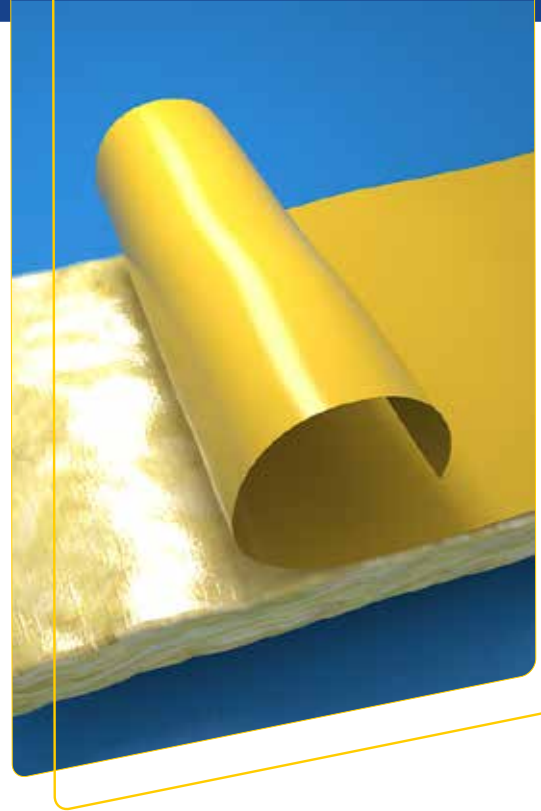
Advanced self-adhesive insulation engineered to reduce noise and optimize energy efficiency for exceptional acoustic and thermal comfort.

GET ON
BOARD
WITH
**GW SEACOMFORT
PROFIX**



WHAT IS GW SEACOMFORT PROFIX?

GW SeaComfort Profix is an innovative self-adhesive glass wool insulation solution engineered for modern marine applications. It replaces traditional installation methods with a faster, cleaner, and more efficient approach, delivering superior performance for shipbuilders and vessel owners.



4 good reasons to choose **Profix**

MAIN BENEFITS

1 SAVE TIME AND COST

With **GW SeaComfort Profix**, installation becomes quicker, easier, and more dependable. Forget welding and washers, this clean, self-adhesive solution streamlines the entire process, saving valuable time and lowering project costs.

2 REDUCE WEIGHT

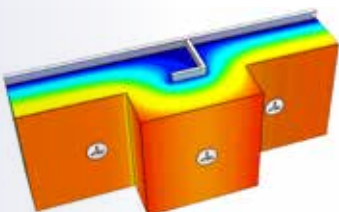
GW SeaComfort and **Profix** backing technology work together to deliver a lightweight solution that requires no extra installation accessories, minimizing overall system weight.

3 REDUCE NOISE AND VIBRATIONS

In shipbuilding, minimizing onboard vibrations and noise is critical. Traditional methods of fastening insulation on metal divisions using pins and washers can unintentionally act as conduits for vibration transmission. These rigid connections allow mechanical energy to transfer through the ship's structure, amplifying noise and creating discomfort throughout living and working spaces.

→ **GW SEACOMFORT Profix** changes that.

By removing vibration-transmitting pins and washers, **GW SeaComfort Profix** provides a smarter, more efficient mounting solution that significantly reduces structure-borne noise. Its advanced self-adhesive design minimizes resonance and prevents vibrations from spreading through bulkheads and decks, helping create quieter, more comfortable spaces onboard.



4 MINIMIZE HEAT LOSS AND MAXIMIZE THERMAL EFFICIENCY

Mechanical fasteners like pins and washers pierce insulation materials, forming direct heat transfer paths through the metal structure. **Profix's** adhesive system keeps the thermal envelope intact, dramatically reducing unwanted heat loss.

ALL YOU NEED TO KNOW

Profix is available on a selection of GW SeaComfort products designed for thermo-acoustic applications.

| | Thicknesses (mm)* | Description |
|--------------------------------|----------------------|---|
| SeaComfort Roll 16 Alu1 | 50 & 100 mm | This lightweight glass wool mat offers excellent thermal performance, achieving a thermal conductivity of 37 mW/m·K at a density of just 16 kg/m ³ . Bonded to a mesh-reinforced aluminum foil, it ensures effective insulation and condensation control—an ideal choice for marine environments where performance and low weight matter most. |
| SeaComfort CRoll 20 Alu1 | 30 mm | This glass wool mat, with a density of 30 kg/m ³ and a thermal conductivity of 36 mW/m·K, is ideal for insulating air-conditioning ducts, equipment, low-temperature piping, and hot-water tanks. Its aluminum-foil facing provides a clean, esthetic finish and ensures effective condensation control. |

*Custom thicknesses available, with every roll wrapped in fire-retardant foil to ensure safety on site.

For more detailed information about the specific products included in the Profix range, please contact your local Isover representative.



DID YOU KNOW

Isover Profix adhesive layer is tested for low flame spread according to IMO FTP code 5 and certified as adhesives under the item MED/3.18⁸ while the glass wool core Sea Comfort is a non-combustible tested according to IMO FTP code part 1 and certified under the item MED/3.13. The Aluminium foil is tested as well for low flame spread.

HOW TO INSTALL?

1. PREPARE THE SURFACE

Reliable adhesion, even on lightly dusty surfaces. For best results, wipe with a clean, dry cloth or use a mild solvent.

2. MEASURE AND CUT THE INSULATION

Cut the insulation to size: Place the insulation with the backing liner facing upward. Use a simple bread-type knife or similar cutting tool to trim the material to the required dimensions.

3. APPLY THE GW SEACOMFORT PROFIX ADHESIVE SYSTEM

Peel the release liner: Partially remove the protective backing to expose the adhesive surface.

Align the insulation: Position the insulation on the metal surface, ensuring accurate alignment before full contact.

Press firmly: Once aligned, press the insulation firmly onto the surface. Ensure that application takes place at temperatures between +10 °C and +35 °C. Apply even pressure across the entire panel to ensure a strong, uniform bond.

Allow curing: Let the adhesive set. Curing time may vary with temperature and humidity, but the bond typically stabilizes within a few hours.





Saint-Gobain ISOVER

Tour Saint-Gobain

12 place de l'Iris

92096 La Défense Cedex - France

www.isover-technical-insulation.com

The information given in this brochure is based on our current knowledge and experience. If any information is incorrect this is not deliberate or grossly negligent. This document is not continually updated and we cannot be held responsible for any unintentional errors. For the most up-to-date information, please visit our website: www.isover-technical-insulation.com