



ISOVER installation guidelines

How to insulate girders (T-shape profiles)?*



Outstanding pliability of ULTIMATE products

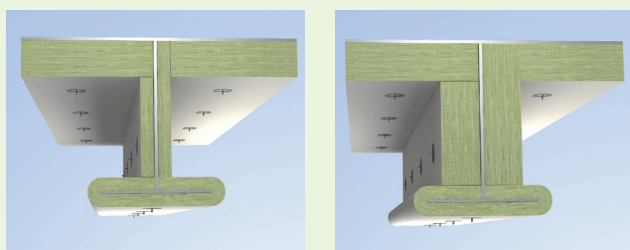
ULTIMATE **SeaProtect** products have an **outstanding ability to be bent around corners and odd shapes without edge breaks.**



Take the full advantage of this unique property of ULTIMATE lightweight mineral wool to install insulation around girders (T-shape profiles) in a fast and easy way**.

"Double wrap" installation method for steel Deck A-60

Cost-efficient solution



Web insulation thickness (vertical part)

25 mm on each side
U SeaProtect Slab 76 25 mm

70 mm on each side***
U SeaProtect Slab or Roll 36 70 mm



- Only 1 pin on the bottom flange (horizontal part)



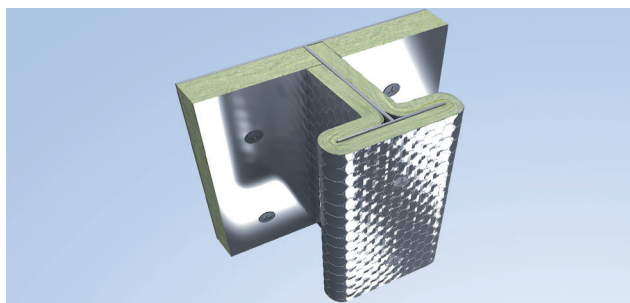
- Thin solution (only 25 mm under the bottom flange)



- Fast and easy to install
- Reduced mounting time
- Optimal safety (no gap due to open joints)

25mm thickness on the horizontal part
U SeaProtect Slab 76 25mm

"Full wrap" installation method for steel Deck A-60



- Only 1 pin on the bottom flange (horizontal part)



- Optimal safety (one product wrapped "all around", no joints)
- Reduced waste due to off-cut

30 mm thickness "all around"
U SeaProtect Wired Mat 76 Alu1 30 mm

* In general, any recommendation for installation or technical guidance given by ISOVER Marine & Offshore is purely advisory, based on the best of our knowledge at the time as a product manufacturer. No liability can be derived there from. ISOVER Marine & Offshore reserves the right to change its technical specifications at any time it deems appropriate.

** According to SOLAS code section Chap II-2/Registration 9/3.4, for stiffeners having length $L \geq 450$ mm, insulation should be installed only up to 450 mm.

*** based on assessment, Bureau Veritas Type Approval certificate pending